

SITE PLAN

JALAN LOYANG BESAR



- | | | |
|---------------------------|-------------------|---------------------------|
| 3-Bedroom Deluxe | 4-Bedroom Classic | 4-Bedroom Premium + Study |
| 3-Bedroom Premium | 4-Bedroom Deluxe | 4-Bedroom Premium + Flexi |
| 3-Bedroom Premium + Study | 4-Bedroom Premium | 5-Bedroom Premium |

THE UPPER DECK (ROOF)



GRAND BOULEVARD

- 1 Coastal Arrival
- 2 Grand Boulevard Lobby
- 3 Cascading Flight
- 4 Canopy Lounge
- 5 Boulevard Lounge
- 6 Boulevard Lawn
- 7 Central Water Stream
- 8 Boulevard Swing
- 9 Boulevard Walk
- 10 Central Sculpture
- 11 Resting Grove
- 12 Lantern Grove
- 13 Central Pavilion

LUSH OASIS

- 14 Grand Lawn
- 15 Boutique Lawn
- 16 Firefly Garden
- 17 Meadow Lawn
- 18 Tea Marquee
- 19 Scented Garden
- 20 Garden Water Feature
- 21 Putting Green
- 22 Maze Garden
- 23 Sensory Garden
- 24 Floral Garden

AZURE BAY

- 25 50m Grand Pool
- 26 Grand Pool Deck
- 27 Aqua Spa
- 28 Picnic Lawn

WELLNESS SANCTUARY

- 29 50m Lifestyle Pool
- 30 Boulevard Cabana
- 31 Spa Seat
- 32 Pool Shower
- 33 Spa Pod
- 34 Zen Deck
- 35 Aqua Foot Spa
- 36 Aqua Lounger
- 37 Aqua Gym
- 38 Bubbling Pool

FAMILY COVE

- 39 Kids Adventure Park
- 40 Splash Pool
- 41 Family Pool
- 42 Family Pool Deck
- 43 Gathering Lounge

THE COASTAL CLUB

- 44 Social Club
- 45 Kids Club
- 46 Function Room 1 - Sea Suite
- 47 Function Room 2 - Bay Suite
- 48 BBQ Courtyard I
- 49 BBQ Courtyard II
- 50 Male Changing & Steam Room
- 51 Female Changing & Steam Room

SECOND STOREY

- 52 Function Room 3 - Boulevard Suite
- 53 Function Room 4 - Coastal Suite

BASEMENT

- 54 Karaoke Room
- 55 Music Room
- 56 Games Club

FITNESS GROVE

- 57 Gym (2nd Storey)
- 58 Yoga Studio
- 59 Fitness Park
- 60 Tennis Court (Recreational)
- 61 Bicycle Parking (Basement)
- 62 Bicycle Station (Basement)

THE UPPER DECK (ROOF)

- 63 Portside Deck
- 64 Starboard Deck
- 65 Sea View Pavilion
- 66 Chill Out Pavilion
- 67 Viewing Deck
- 68 Yoga Deck

ANCILLARY

- A Guard House
- B Side Gate 1, 2 & 3
- C Accessible Toilet
- D Management Office
- E Ventilation Shaft
- F Genset
- G Substation (Basement)
- H Bin Centre (Basement)

DISTRIBUTION CHART

Unit

Floor

11

10

9

8

7

6

5

4

3

2

1

B1

BLOCK 2

Jalan Loyang Besar S(508855)

12

11

10

9

8

7

6

5

4

3

2

1

B1

1

2

3

4

ROOF TERRACE

C3

D3

D2

C3

C3

D3

D2

C3

C3

D3

D2

C3

C3

D3

D2

C3

C3 (p)

D3 (p)

D2 (p)

C3 (p)

CARPARK

BLOCK 4

Jalan Loyang Besar S(508856)

12

11

10

9

8

7

6

5

4

3

2

1

B1

5

6

7

8

ROOF TERRACE

D4-B

C2

C2

D2

D4-B

C2

C2

D2

D4-B

C2

C2

D2

D4-B

C2

C2

D2

D4

C2

C2

D2

D4

C2

C2

D2

C2

D2

C2 (p)

D2 (p)

CARPARK

BLOCK 6

Jalan Loyang Besar S(508857)

12

11

10

9

8

7

6

5

4

3

2

1

B1

9

10

11

12

D4-B

E2

C3

C1a

D4-B

E2

C3

C1a

D4-B

E2

C3

C1a

D4-B

E2

C3

C1a

D4-B

E2

C3

C1a

D4

E1

C3

C1a

D4

E1

C3

C1a

D4

E1

C3

C1a

D4

E1

C3

C1a

D4 (p)

E1 (p)

C3 (p)

C1a (p)

CARPARK

BLOCK 8

Jalan Loyang Besar S(508858)

12

11

10

9

8

7

6

5

4

3

2

1

B1

13

14

15

16

E2

D1

C1a

C2

E2

D1

C1a

C2

E2

D1

C1a

C2

E2

D1

C1a

C2

E2

D1

C1a

C2

E1

D1

C1a

C2

E1

D1

C1a

C2

E1

D1

C1a

C2

E1

D1

C1a

C2

E1 (p)

D1 (p)

C1a (p)

C2 (p)

CARPARK

Unit

Floor

12

11

10

9

8

7

6

5

4

3

2

1

B1

BLOCK 16

Jalan Loyang Besar S(508833)

32

31

30

29

C3

D3

D2

C2

C3

D3

D2

C2

C3

D3

D2

C2

C3

D3

D2

C2

C3

D3

D2

C2

C3

D3

D2

C2

C3 (p)

D3 (p)

D2 (p)

C2 (p)

CARPARK

Unit

Floor

12

11

10

9

8

7

6

5

4

3

2

1

B1

BLOCK 14

Jalan Loyang Besar S(508832)

28

27

26

25

D4

C2

D5

D2

D4

C2

D5

D2

D4

C2

D5

D2

D4

C2

D5

D2

D4

C2

D5

D2

D4

C2

D5

D2

D4

C2

D5

D2

D4 (p)

C2 (p)

D5 (p)

D2 (p)

CARPARK

Unit

Floor

12

11

10

9

8

7

6

5

4

3

2

1

B1

BLOCK 12

Jalan Loyang Besar S(508831)

24

23

22

21

C3

D4

C1b

D5

C3

D4

C1b

D5

C3

D4

C1b

D5

C3

D4

C1b

D5

C3

D4

C1b

D5

C3

D4

C1b

D5

C3

D4

C1b

D5

C3

D4

C1b

D5

C3 (p)

D4 (p)

C1b (p)

D5 (p)

CARPARK

Unit

Floor

12

11

10

9

8

7

6

5

4

3

2

1

B1

BLOCK 10

Jalan Loyang Besar S(508859)

20

19

18

17

D3

C2

C3

C1b

D3

C2

C3

C1b

D3

C2

C3

C1b

D3

C2

C3

C1b

D3

C2

C3

C1b

D3

C2

C3

C1b

D3

C2

C3

C1b

D3

C2

C3

C1b

D3

C2

C3

C1b

D3 (p)

C2 (p)

C3 (p)

C1b (p)

CARPARK

Unit

Floor

12

11

10

9

8

7

6

5

4

3

2

1

B1

BLOCK 18

Jalan Loyang Besar S(508834)

33

34

35

36

C3

D2

D3

C2

C3

D2

D3

C2

C3

D2

D3

C2

C3

D2

D3

C2

C3

D2

D3

C2

C3

D2

D3

C2

C3 (p)

D2 (p)

D3 (p)

C2 (p)

CARPARK

Unit

Floor

12

11

10

9

8

7

6

5

4

3

2

1

B1

BLOCK 20

Jalan Loyang Besar S(508835)

37

38

39

40

D2

D5

C3

D4

D2

D5

C3

D4

D2

D5

C3

D4

D2

D5

C3

D4

D2

D5

C3

D4

D2

D5

C3

D4

D2

D5

C3

D4

D2

D5

C3

D4

D2 (p)

D5 (p)

C3 (p)

D4 (p)

CARPARK

Unit

Floor

12

11

10

9

8

7

6

5

4

3

2

1

B1

BLOCK 22

Jalan Loyang Besar S(508826)

41

42

43

44

D5

D2

D4

C2

D5

D2

D4

C2

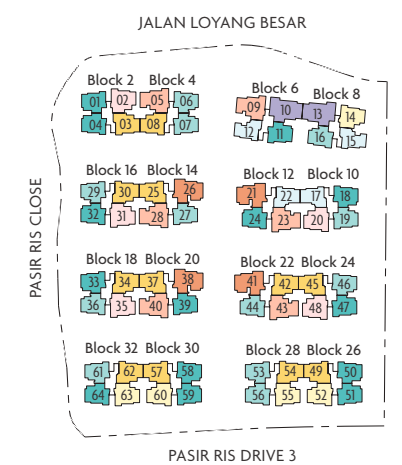
D5

D2

D4

C2

<



-  3-Bedroom Deluxe
-  3-Bedroom Premium
-  3-Bedroom Premium + Study
-  4-Bedroom Classic
-  4-Bedroom Deluxe
-  4-Bedroom Premium
-  4-Bedroom Premium + Study
-  4-Bedroom Premium + Flexi
-  5-Bedroom Premium

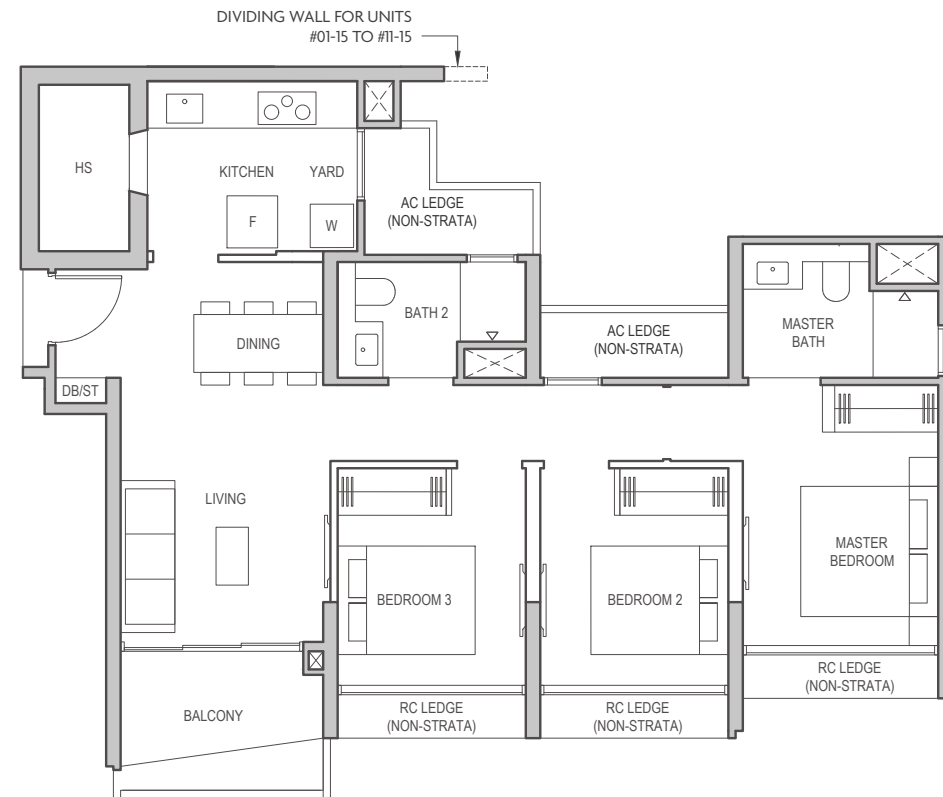
3-BEDROOM DELUXE

Type C1a 81 sqm (872 sq ft)

Block 8 #02-15 to #11-15

*Mirrored Units

Block 6 #02-12* to #11-12*

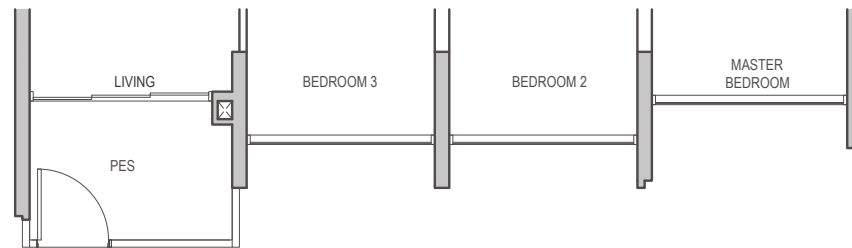


Type C1a (p) 81 sqm (872 sq ft)

Block 8 #01-15

*Mirrored Units

Block 6 #01-12*

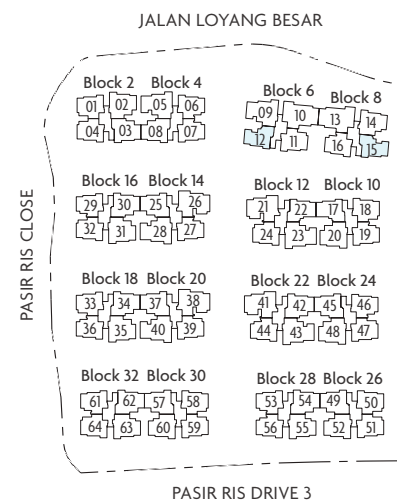


PES - Private Enclosed Space
WC - Water Closet
F - Fridge (not included)
W - Washer (not included)
DB/ST - Distribution Board/Storage
HS - Household Shelter
RC - Reinforced Concrete
AC - Air-Conditioner
■ - Wall not allowed to be hacked or altered



Key plan is not drawn to scale

Area includes balcony or private enclosed space (PES), where applicable. All AC ledges and RC ledges (non-load bearing) are excluded from strata area. The above plans and illustrations are subject to change as may be required or approved by the relevant authorities. All areas and measurements stated herein as approximate and subject to final survey.



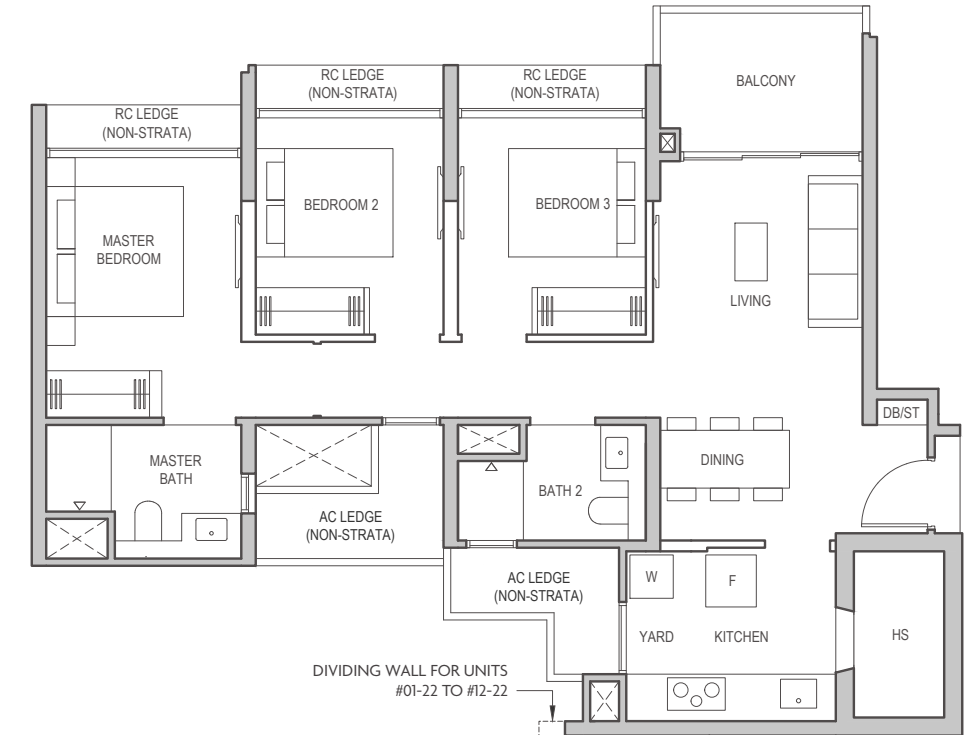
3-BEDROOM DELUXE

Type C1b 81 sqm (872 sq ft)

Block 10 #02-17 to #12-17

*Mirrored Units

Block 12 #02-22* to #12-22*

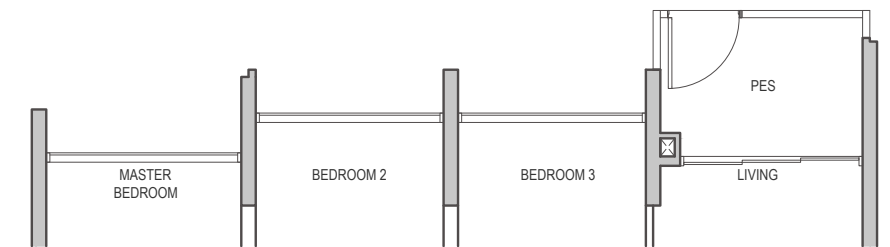


Type C1b (p) 81 sqm (872 sq ft)

Block 10 #01-17

*Mirrored Units

Block 12 #01-22*

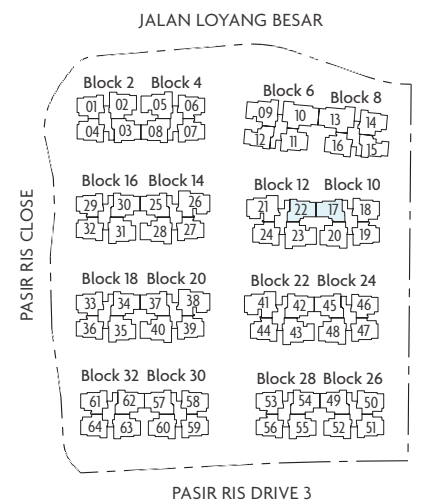


PES - Private Enclosed Space
WC - Water Closet
F - Fridge (not included)
W - Washer (not included)
DB/ST - Distribution Board/Storage
HS - Household Shelter
RC - Reinforced Concrete
AC - Air-Conditioner
■ - Wall not allowed to be hacked or altered



Key plan is not drawn to scale

Area includes balcony or private enclosed space (PES), where applicable. All AC ledges and RC ledges (non-load bearing) are excluded from strata area. The above plans and illustrations are subject to change as may be required or approved by the relevant authorities. All areas and measurements stated herein as approximate and subject to final survey.



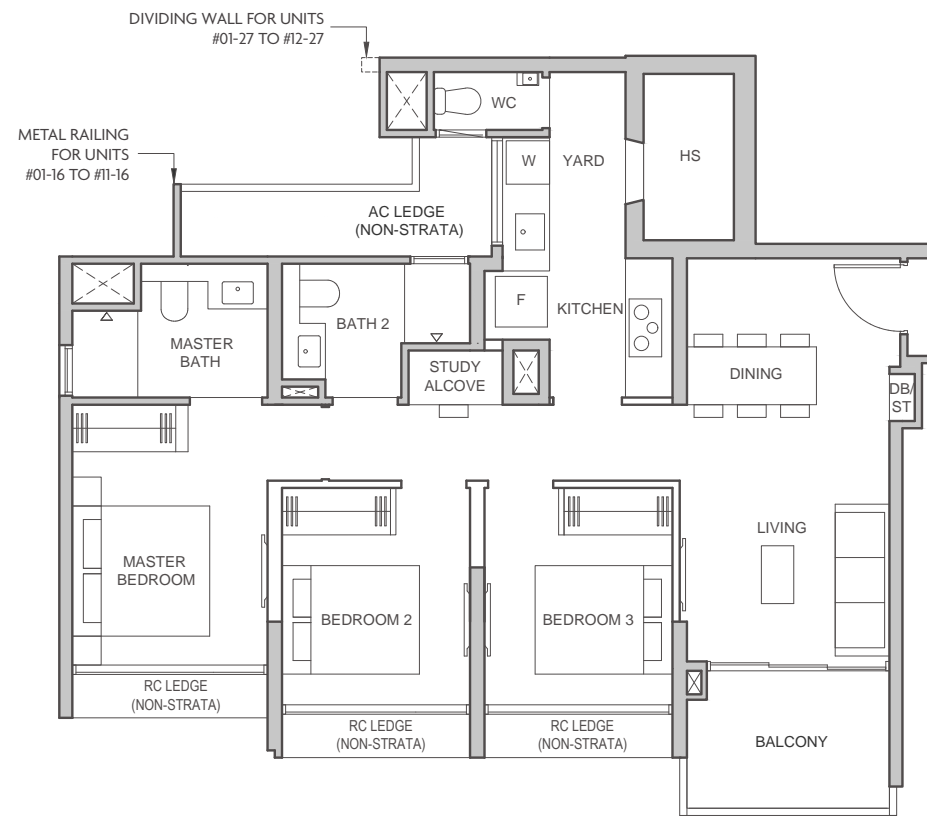
3-BEDROOM PREMIUM

Type C2 85 sqm (915 sq ft)

Block 4 #03-06 to #11-06
Block 8 #02-16 to #11-16
Block 18 #02-36 to #12-36
Block 22 #02-44 to #12-44
Block 24 #02-46 to #12-46
Block 28 #02-56 to #12-56

*Mirrored Units

Block 4 #02-07* to #11-07*
Block 10 #02-19* to #12-19*
Block 14 #02-27* to #12-27*
Block 16 #02-29* to #12-29*
Block 28 #02-53* to #12-53*
Block 32 #02-61* to #12-61*

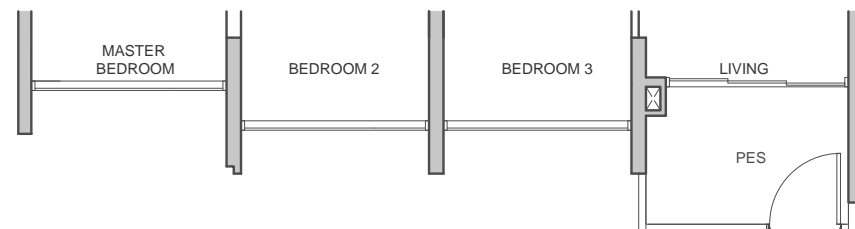


Type C2 (p) 85 sqm (915 sq ft)

Block 8 #01-16
Block 18 #01-36
Block 22 #01-44
Block 24 #01-46
Block 28 #01-56

*Mirrored Units

Block 4 #01-07*
Block 10 #01-19*
Block 14 #01-27*
Block 16 #01-29*
Block 28 #01-53*
Block 32 #01-61*

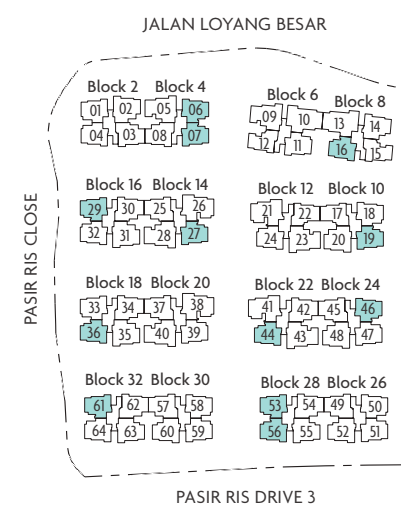


PES - Private Enclosed Space
WC - Water Closet
F - Fridge (not included)
W - Washer (not included)
DB/ST - Distribution Board/Storage
HS - Household Shelter
RC - Reinforced Concrete
AC - Air-Conditioner
■ - Wall not allowed to be hacked or altered



Key plan is not drawn to scale

Area includes balcony or private enclosed space (PES), where applicable. All AC ledges and RC ledges (non-load bearing) are excluded from strata area. The above plans and illustrations are subject to change as may be required or approved by the relevant authorities. All areas and measurements stated herein as approximate and subject to final survey.

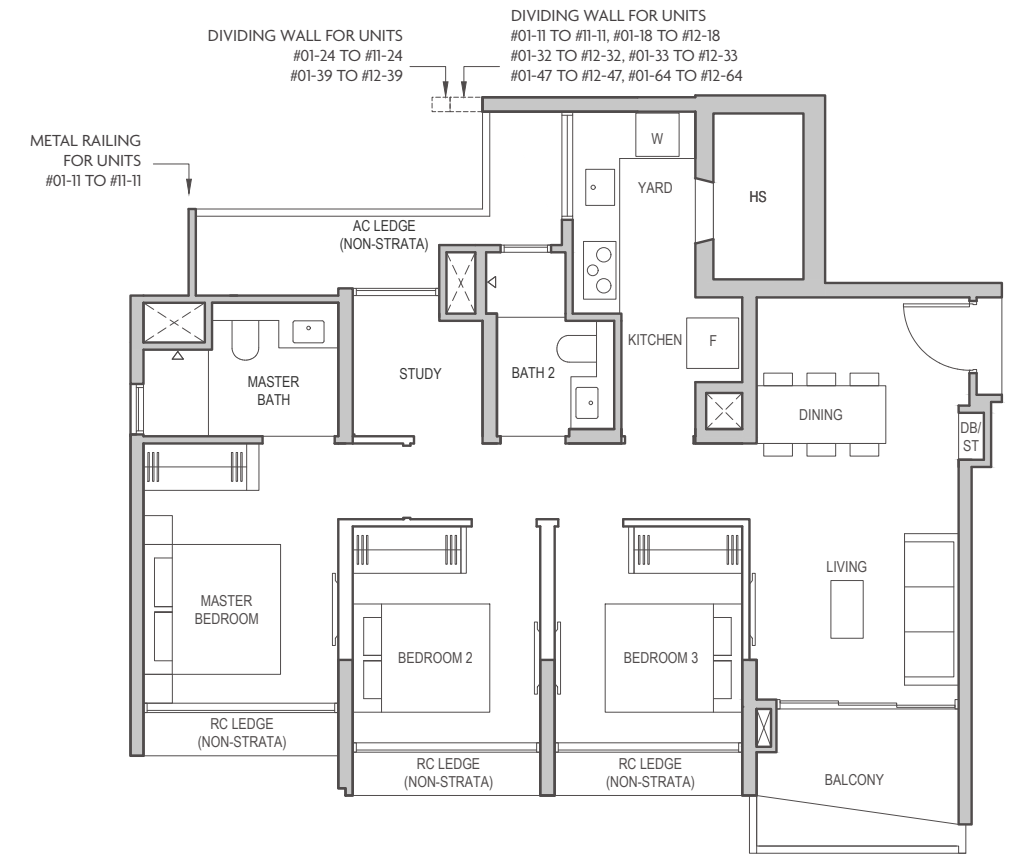


Type C3 85 sqm (915 sq ft)

Block 2 #02-04 to #11-04
Block 10 #02-18 to #12-18
Block 12 #02-24 to #12-24
Block 16 #02-32 to #12-32
Block 26 #02-50 to #12-50
Block 30 #02-58 to #12-58
Block 32 #02-64 to #12-64

*Mirrored Units

Block 2 #02-01* to #11-01*
Block 6 #02-11* to #11-11*
Block 18 #02-33* to #12-33*
Block 20 #02-39* to #12-39*
Block 24 #02-47* to #12-47*
Block 26 #02-51* to #12-51*
Block 30 #02-59* to #12-59*

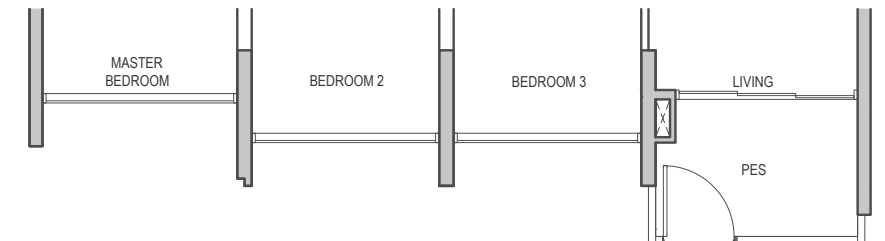


Type C3 (p) 85 sqm (915 sq ft)

Block 2 #01-04
Block 10 #01-18
Block 12 #01-24
Block 16 #01-32
Block 26 #01-50
Block 30 #01-58
Block 32 #01-64

*Mirrored Units

Block 2 #01-01*
Block 6 #01-11*
Block 18 #01-33*
Block 20 #01-39*
Block 24 #01-47*
Block 26 #01-51*
Block 30 #01-59*

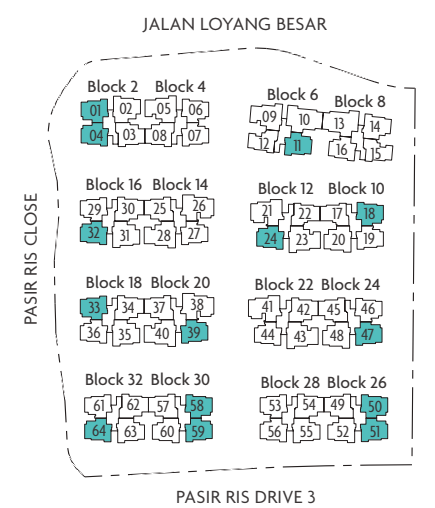


PES - Private Enclosed Space
WC - Water Closet
F - Fridge (not included)
W - Washer (not included)
DB/ST - Distribution Board/Storage
HS - Household Shelter
RC - Reinforced Concrete
AC - Air-Conditioner
■ - Wall not allowed to be hacked or altered



Key plan is not drawn to scale

Area includes balcony or private enclosed space (PES), where applicable. All AC ledges and RC ledges (non-load bearing) are excluded from strata area. The above plans and illustrations are subject to change as may be required or approved by the relevant authorities. All areas and measurements stated herein as approximate and subject to final survey.



4-BEDROOM CLASSIC

Type D1 92 sqm (990 sq ft)

Block 8 #02-14 to #11-14
Block 26 #02-52 to #12-52
Block 30 #02-60 to #12-60

*Mirrored Units

Block 28 #02-55* to #12-55*
Block 32 #02-63* to #12-63*

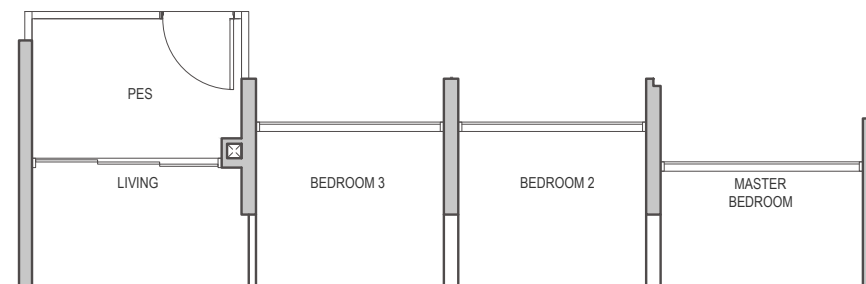


Type D1 (p) 92 sqm (990 sq ft)

Block 8 #01-14
Block 26 #01-52
Block 30 #01-60

*Mirrored Units

Block 28 #01-55*
Block 32 #01-63*

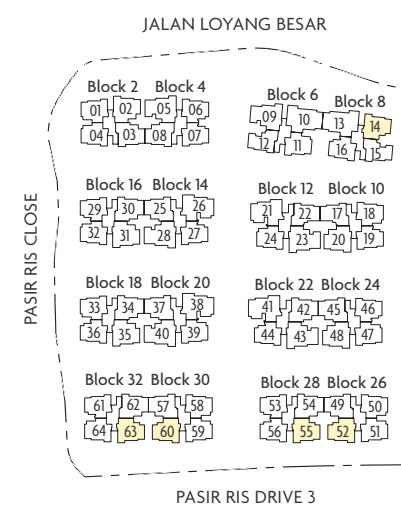


PES - Private Enclosed Space
WC - Water Closet
F - Fridge (not included)
W - Washer (not included)
DB/ST - Distribution Board/Storage
HS - Household Shelter
RC - Reinforced Concrete
AC - Air-Conditioner
■ - Wall not allowed to be hacked or altered



Key plan is not drawn to scale

Area includes balcony or private enclosed space (PES), where applicable. All AC ledges and RC ledges (non-load bearing) are excluded from strata area. The above plans and illustrations are subject to change as may be required or approved by the relevant authorities. All areas and measurements stated herein as approximate and subject to final survey.



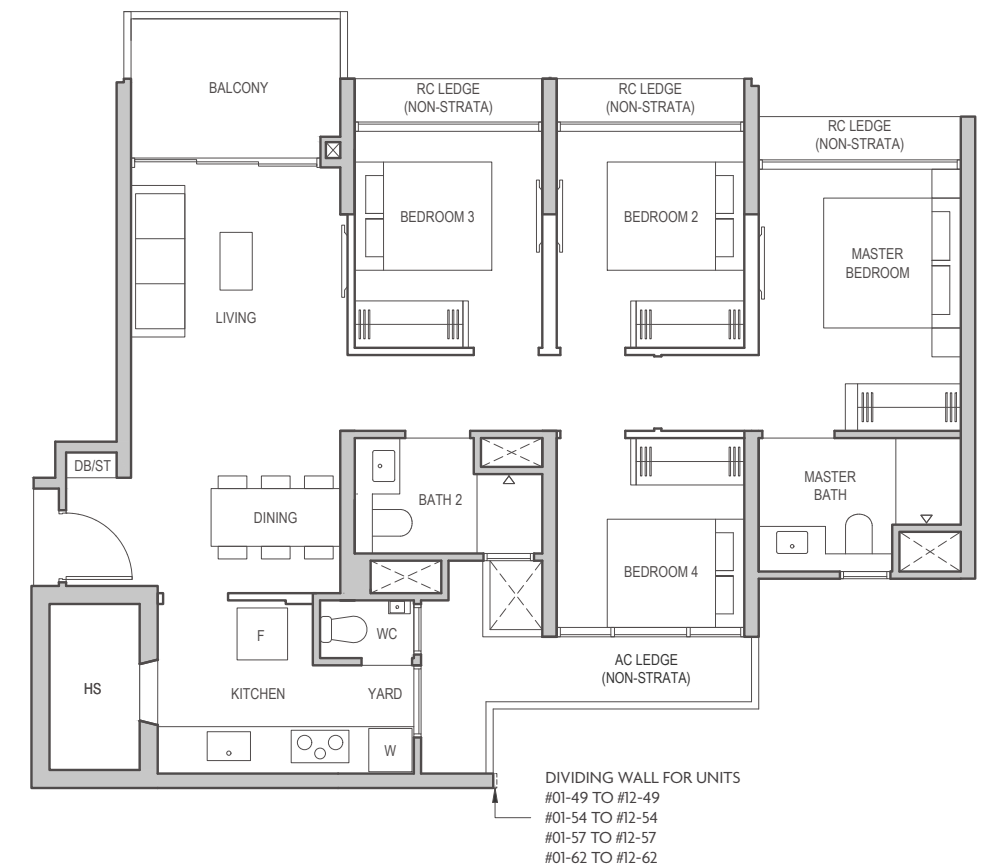
4-BEDROOM DELUXE

Type D2 94 sqm (1012 sq ft)

Block 4 #02-08 to #11-08
Block 16 #02-30 to #12-30
Block 18 #02-34 to #12-34
Block 22 #02-42 to #12-42
Block 28 #02-54 to #12-54
Block 32 #02-62 to #12-62

*Mirrored Units

Block 2 #02-03* to #11-03*
Block 14 #02-25* to #12-25*
Block 20 #02-37* to #12-37*
Block 24 #02-45* to #12-45*
Block 26 #02-49* to #12-49*
Block 30 #02-57* to #12-57*

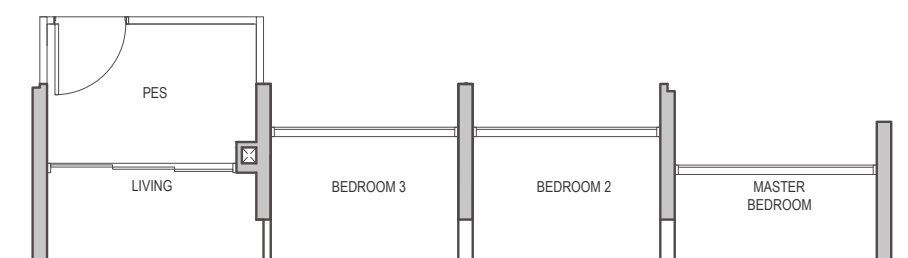


Type D2 (p) 94 sqm (1012 sq ft)

Block 4 #01-08
Block 16 #01-30
Block 18 #01-34
Block 22 #01-42
Block 28 #01-54
Block 32 #01-62

*Mirrored Units

Block 2 #01-03*
Block 14 #01-25*
Block 20 #01-37*
Block 24 #01-45*
Block 26 #01-49*
Block 30 #01-57*

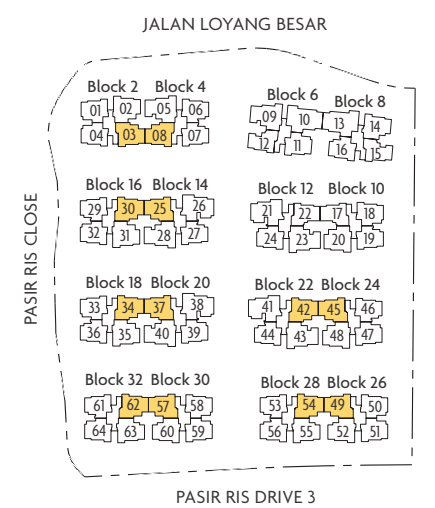


PES - Private Enclosed Space
WC - Water Closet
F - Fridge (not included)
W - Washer (not included)
DB/ST - Distribution Board/Storage
HS - Household Shelter
RC - Reinforced Concrete
AC - Air-Conditioner
■ - Wall not allowed to be hacked or altered



Key plan is not drawn to scale

Area includes balcony or private enclosed space (PES), where applicable. All AC ledges and RC ledges (non-load bearing) are excluded from strata area. The above plans and illustrations are subject to change as may be required or approved by the relevant authorities. All areas and measurements stated herein as approximate and subject to final survey.

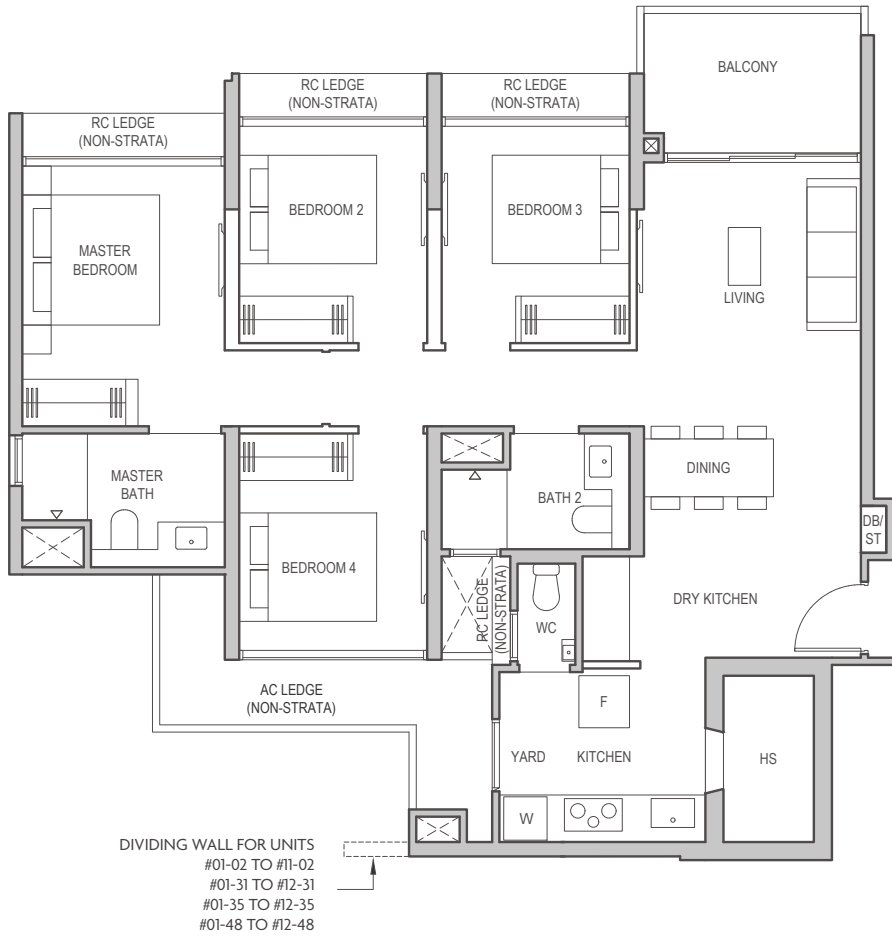


4-BEDROOM PREMIUM

Type D3
98 sqm (1055 sq ft)

Block 16 #02-31 to #12-31
Block 18 #02-35 to #12-35

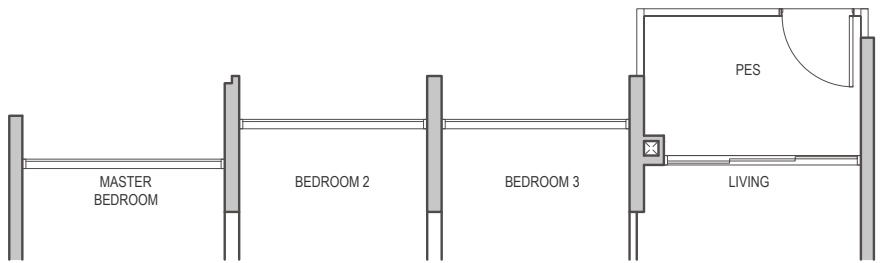
*Mirrored Units
Block 2 #02-02* to #11-02*
Block 10 #02-20* to #12-20*
Block 24 #02-48* to #12-48*



Type D3 (p)
98 sqm (1055 sq ft)

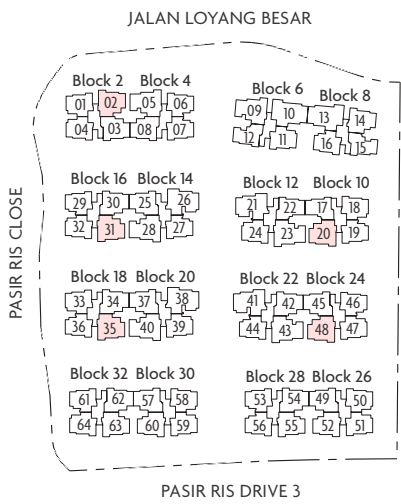
Block 16 #01-31
Block 18 #01-35

*Mirrored Units
Block 2 #01-02*
Block 10 #01-20*
Block 24 #01-48*



PES - Private Enclosed Space
WC - Water Closet
F - Fridge (not included)
W - Washer (not included)
DB/ST - Distribution Board/Storage
HS - Household Shelter
RC - Reinforced Concrete
AC - Air-Conditioner
■ - Wall not allowed to be hacked or altered

Area includes balcony or private enclosed space (PES), where applicable. All AC ledges and RC ledges (non-load bearing) are excluded from strata area. The above plans and illustrations are subject to change as may be required or approved by the relevant authorities. All areas and measurements stated herein as approximate and subject to final survey.

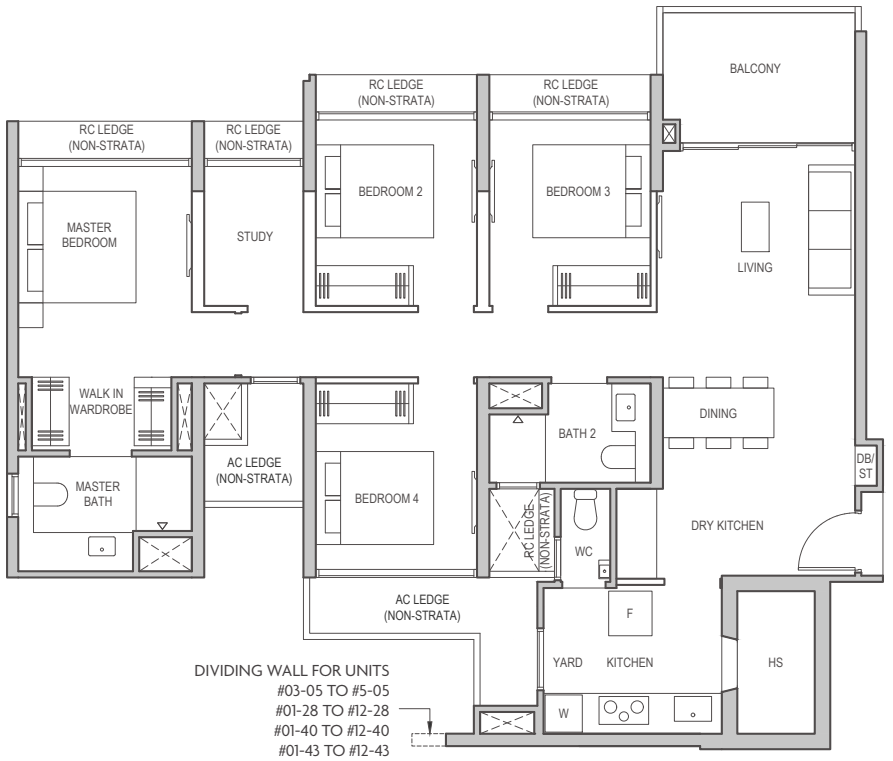


4 BEDROOM PREMIUM + STUDY

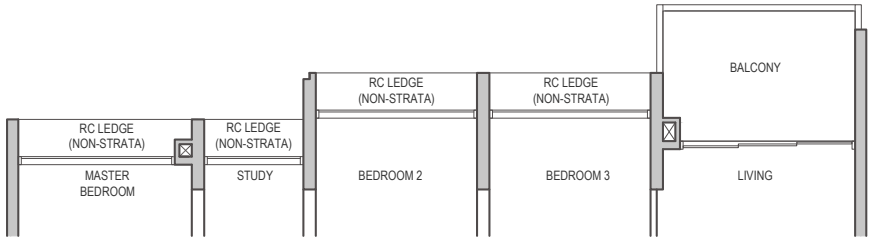
Type D4
108 sqm (1163 sq ft)

Block 12 #02-23 to #12-23
Block 22 #02-43 to #12-43

*Mirrored Units
Block 14 #02-28* to #12-28*
Block 20 #02-40* to #12-40*



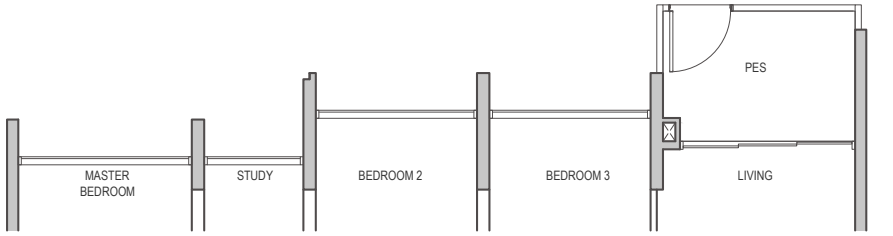
Block 4 #03-05 to #05-05
Block 6 #02-09 to #05-09



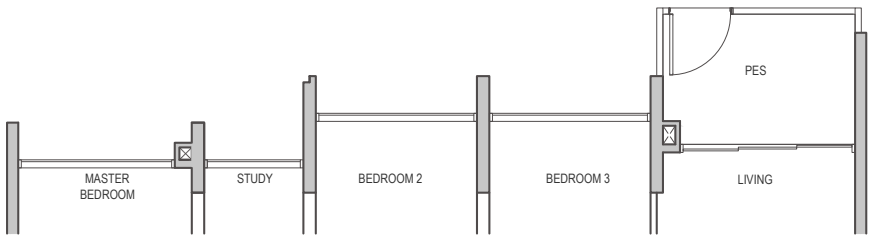
Type D4 (p)
108 sqm (1163 sq ft)

Block 12 #01-23
Block 22 #01-43

*Mirrored Units
Block 14 #01-28*
Block 20 #01-40*

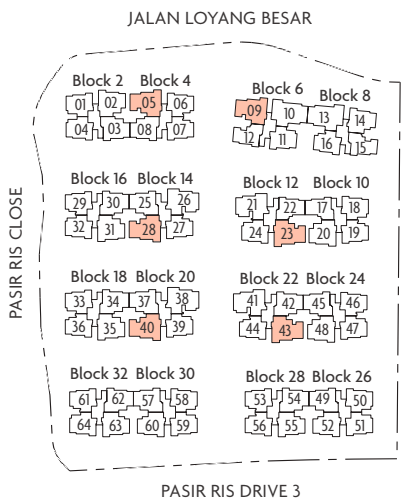


Block 6 #01-09



PES - Private Enclosed Space
WC - Water Closet
F - Fridge (not included)
W - Washer (not included)
DB/ST - Distribution Board/Storage
HS - Household Shelter
RC - Reinforced Concrete
AC - Air-Conditioner
■ - Wall not allowed to be hacked or altered

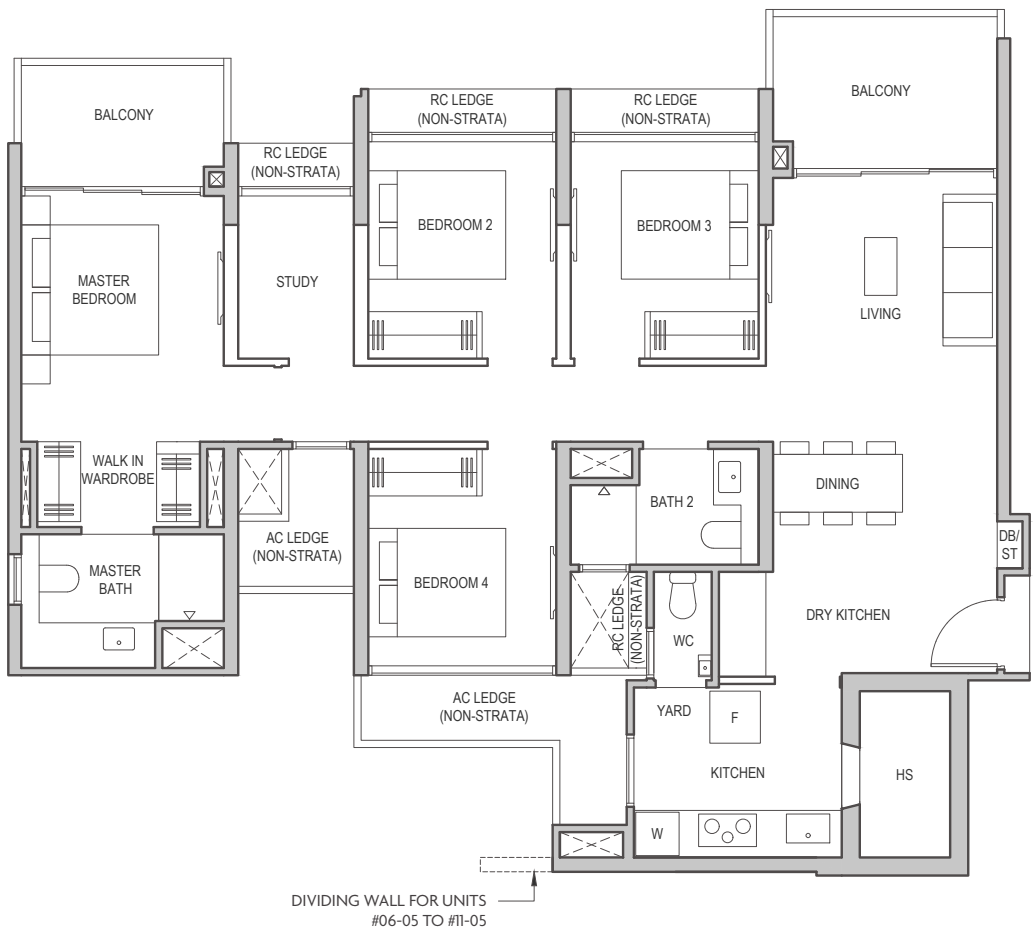
Area includes balcony or private enclosed space (PES), where applicable. All AC ledges and RC ledges (non-load bearing) are excluded from strata area. The above plans and illustrations are subject to change as may be required or approved by the relevant authorities. All areas and measurements stated herein as approximate and subject to final survey.



4 BEDROOM PREMIUM + STUDY

Type D4-B
113 sqm (1216 sq ft)

Block 4 #06-05 to #11-05
Block 6 #06-09 to #11-09

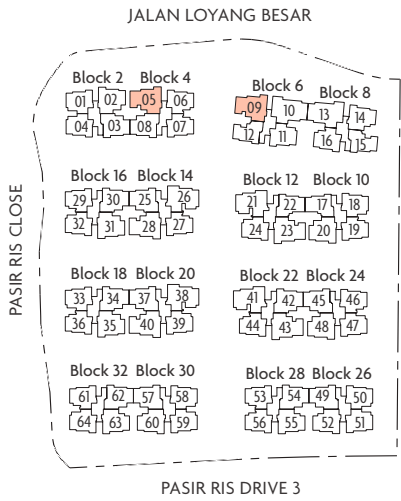


PES - Private Enclosed Space
WC - Water Closet
F - Fridge (not included)
W - Washer (not included)
DB/ST - Distribution Board/Storage
HS - Household Shelter
RC - Reinforced Concrete
AC - Air-Conditioner
■ - Wall not allowed to be hacked or altered

Area includes balcony or private enclosed space (PES), where applicable. All AC ledges and RC ledges (non-load bearing) are excluded from strata area. The above plans and illustrations are subject to change as may be required or approved by the relevant authorities. All areas and measurements stated herein as approximate and subject to final survey.



Key plan is not drawn to scale



4 BEDROOM PREMIUM + FLEXI

Type D5
112 sqm (1206 sq ft)

Block 12 #02-21 to #12-21
Block 22 #02-41 to #12-41

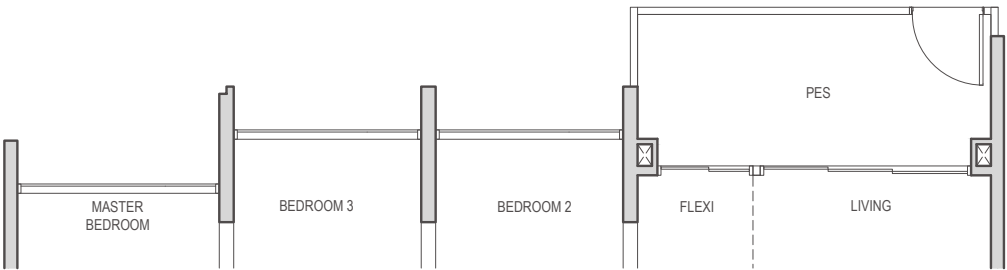
*Mirrored Units
Block 14 #02-26* to #12-26*
Block 20 #02-38* to #12-38*



Type D5 (p)
112 sqm (1206 sq ft)

Block 12 #01-21
Block 22 #01-41

*Mirrored Units
Block 14 #01-26*
Block 20 #01-38*

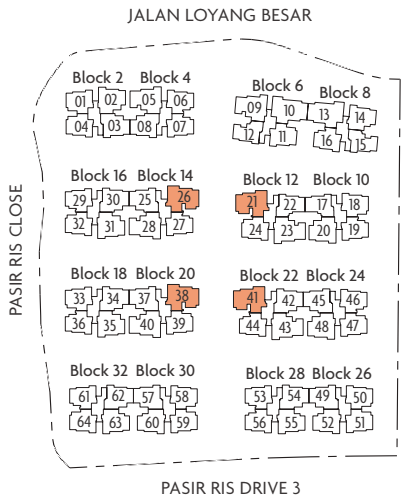


PES - Private Enclosed Space
WC - Water Closet
F - Fridge (not included)
W - Washer (not included)
DB/ST - Distribution Board/Storage
HS - Household Shelter
RC - Reinforced Concrete
AC - Air-Conditioner
■ - Wall not allowed to be hacked or altered

Area includes balcony or private enclosed space (PES), where applicable. All AC ledges and RC ledges (non-load bearing) are excluded from strata area. The above plans and illustrations are subject to change as may be required or approved by the relevant authorities. All areas and measurements stated herein as approximate and subject to final survey.



Key plan is not drawn to scale

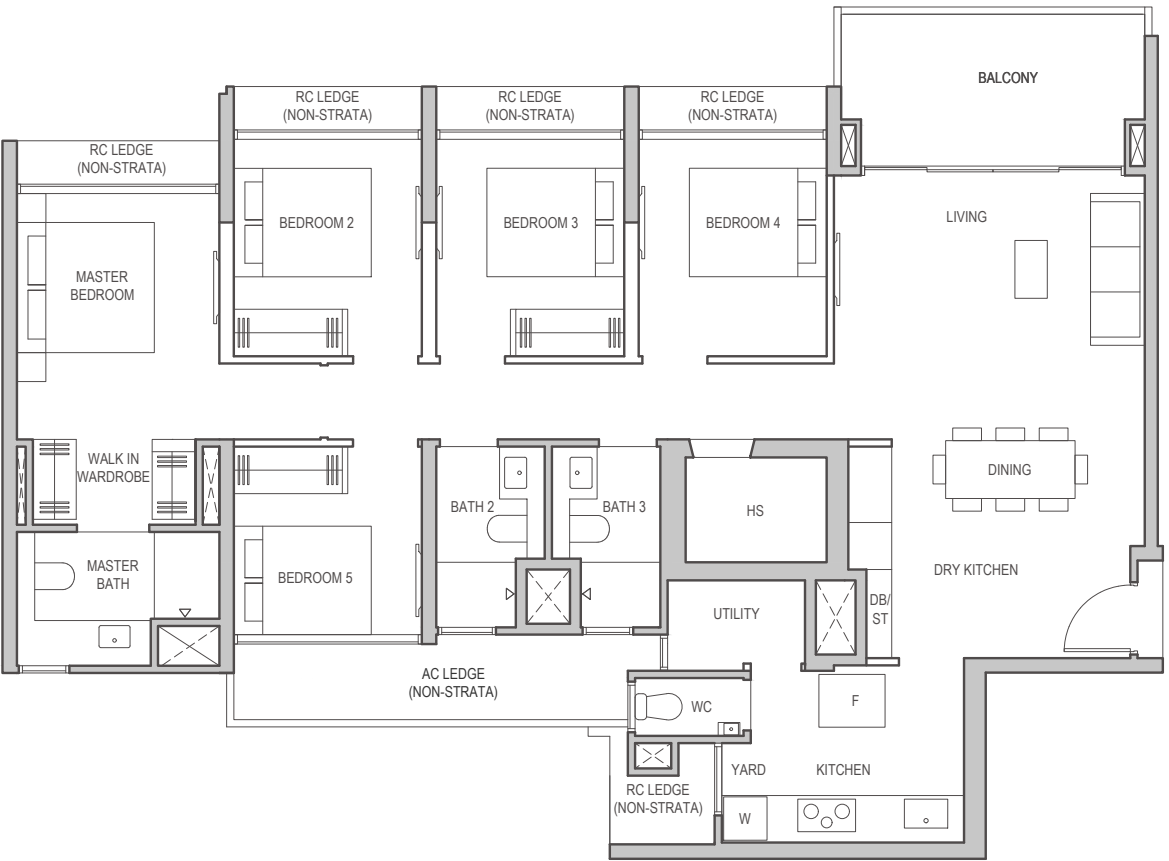


5 BEDROOM PREMIUM

Type E1
127 sqm (1367 sq ft)

Block 8 #02-13 to #5-13

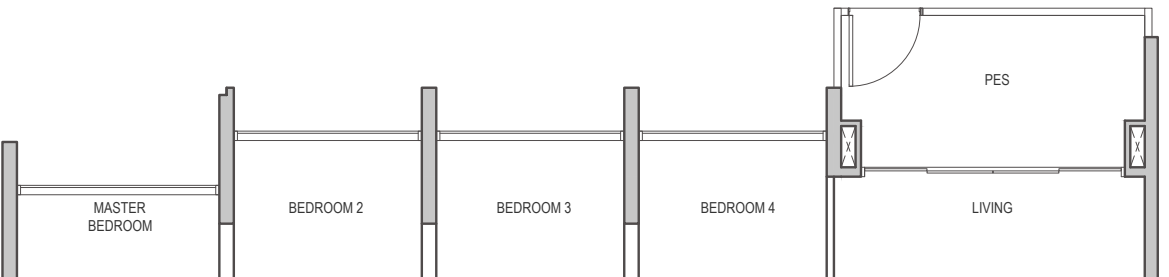
*Mirrored Units
Block 6 #02-10* to #5-10*



Type E1 (p)
127 sqm (1367 sq ft)

Block 8 #01-13

*Mirrored Units
Block 6 #01-10*

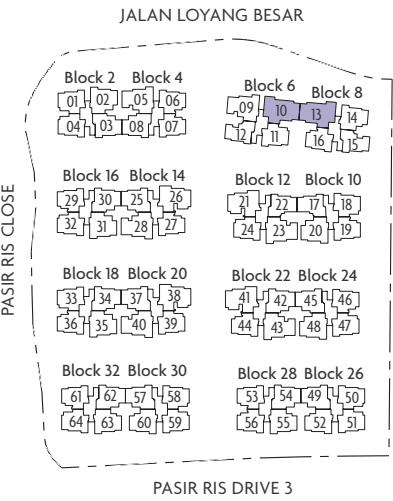


- PES - Private Enclosed Space
- WC - Water Closet
- F - Fridge (not included)
- W - Washer (not included)
- DB/ST - Distribution Board/Storage
- HS - Household Shelter
- RC - Reinforced Concrete
- AC - Air-Conditioner
- - Wall not allowed to be hacked or altered



Key plan is not drawn to scale

Area includes balcony or private enclosed space (PES), where applicable. All AC ledges and RC ledges (non-load bearing) are excluded from strata area. The above plans and illustrations are subject to change as may be required or approved by the relevant authorities. All areas and measurements stated herein as approximate and subject to final survey.

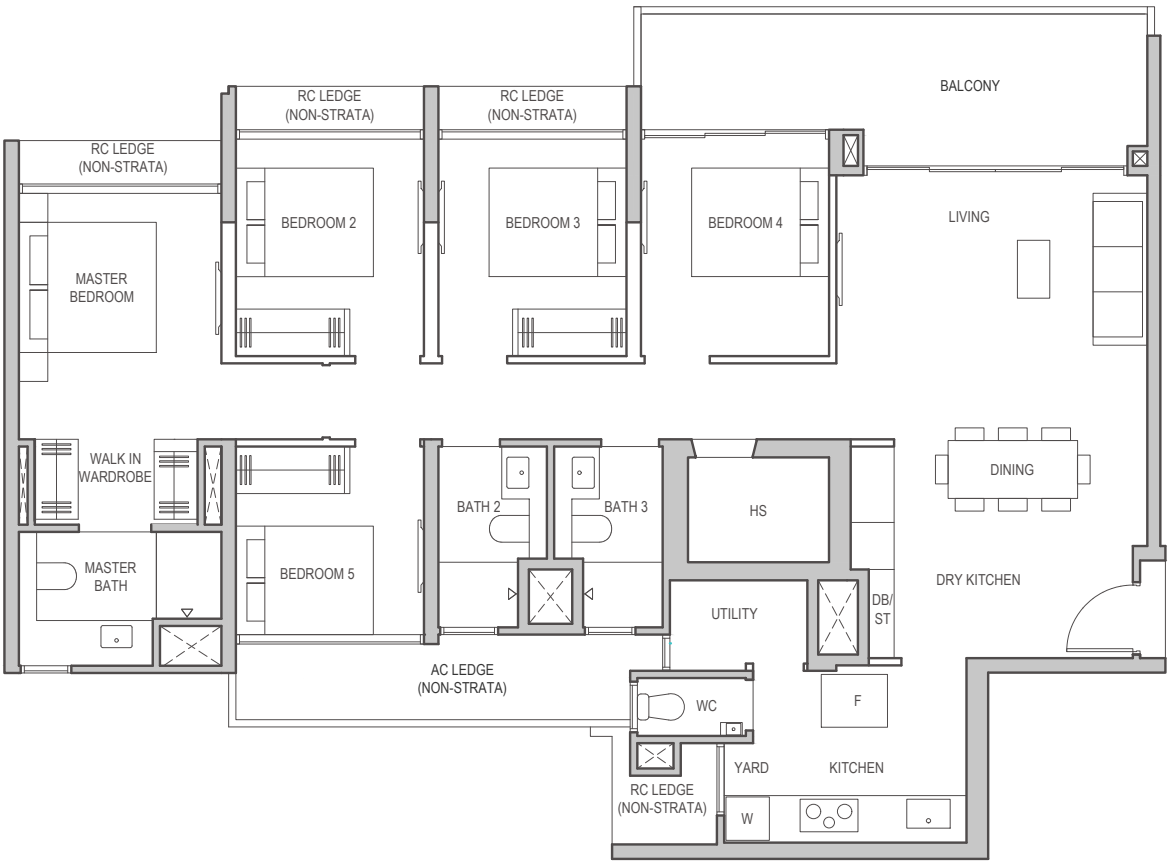


5 BEDROOM PREMIUM

Type E2
132 sqm (1421 sq ft)

Block 8 #06-13 to #11-13

*Mirrored Units
Block 6 #06-10* to #11-10*

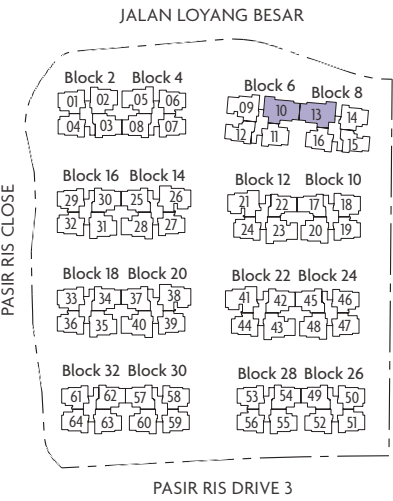


- PES - Private Enclosed Space
- WC - Water Closet
- F - Fridge (not included)
- W - Washer (not included)
- DB/ST - Distribution Board/Storage
- HS - Household Shelter
- RC - Reinforced Concrete
- AC - Air-Conditioner
- - Wall not allowed to be hacked or altered

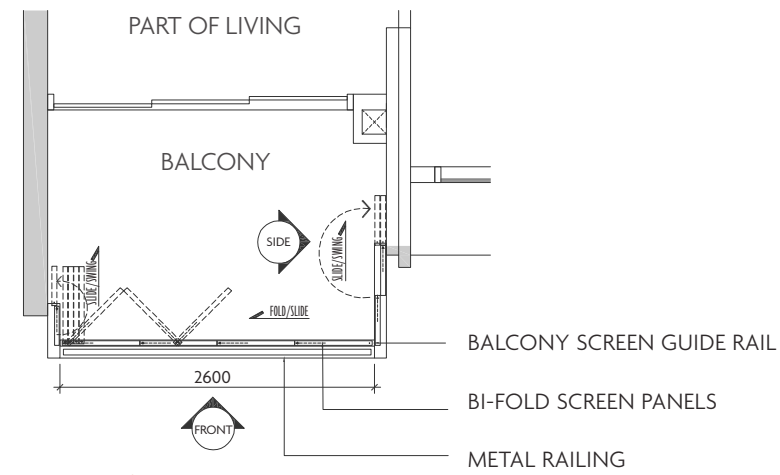


Key plan is not drawn to scale

Area includes balcony or private enclosed space (PES), where applicable. All AC ledges and RC ledges (non-load bearing) are excluded from strata area. The above plans and illustrations are subject to change as may be required or approved by the relevant authorities. All areas and measurements stated herein as approximate and subject to final survey.

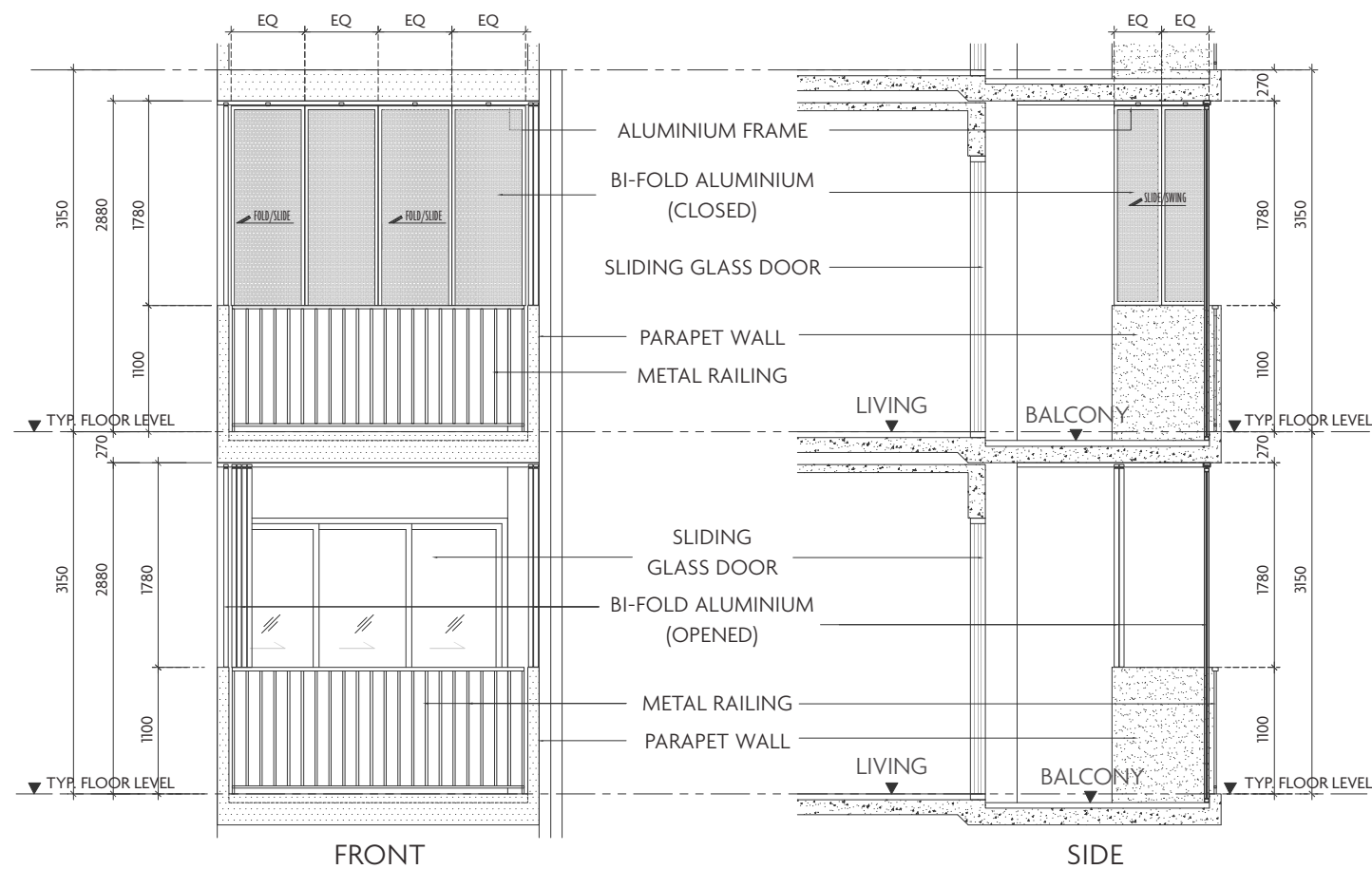


BALCONY AND PES ENCLOSURE RESTRICTION (APPROVED BALCONY SCREEN)



TYPICAL UNIT PLAN

SCALE 1:75



ELEVATIONS

SCALE 1:75

NOTES:

- Balcony(ies) (if any) and Private Enclosed space(s) (if any) in the unit is/are not to be enclosed, either partially or in full, except with the approved balcony screens.
- The proposed Balcony(ies) and Private Enclosed space(s) screen shall allow natural ventilation at all times including when the screens are fully closed and are capable of being fully retracted.
- The installation and cost of such screens shall be at the Purchaser's own cost and expense.
- Information is accurate at point of printing.

- EQ: Equal Division



QINGJIAN REALTY (SOUTH PACIFIC) GROUP PTE LTD

Qingjian Realty (South Pacific) Group Pte Ltd (Qingjian Realty) is the regional HQ of Qingjian Group's real estate development arm in Southeast Asia. We specialise in property development in the residential, commercial, and industrial sectors. Throughout the years, Qingjian Realty has constantly innovated to provide thoughtful, award-winning homes that complement the ever-changing lifestyles of today's homeowners. We paved the way for smart home living in Singapore, with the launch of The Visionaire – the city's first executive condominium with homes fully suited with cutting-edge smart technology. Our commitment to providing quality, contemporary homes as a reputed developer in Singapore has been widely recognised. Qingjian Realty has consistently received the BCI Asia Top Ten Award, various awards from Asia Property Awards, and the BCA Awards, amongst many others.



FORSEA HOLDINGS PTE LTD

Forsea Holdings Pte Ltd is a subsidiary of a globally renowned Fortune 500 construction group, an infrastructure powerhouse in China, and is dedicated to innovative and high-quality real estate development. With years of building expertise, Forsea takes pride as the reliable partner in providing extensive solutions and end-products of exceptional quality. Forsea's commitment to quality is backed by the Company's large pool of resources, engineering expertise and proven experience. Based on strong client collaboration, effective communication, as well as supportive management, Forsea is devoted to delivering quality homes that transcend generations.